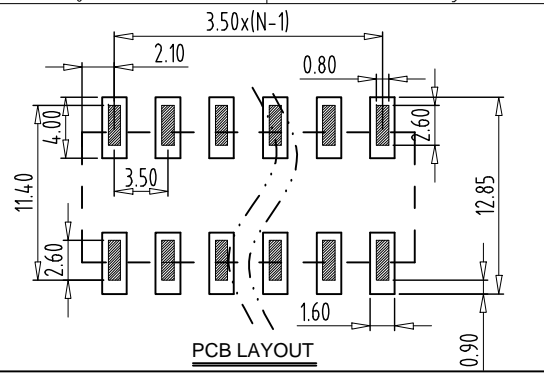
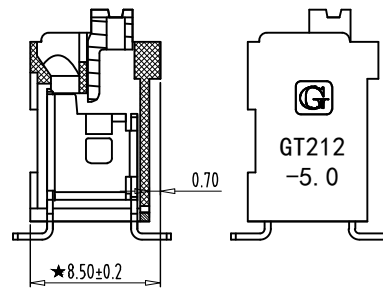
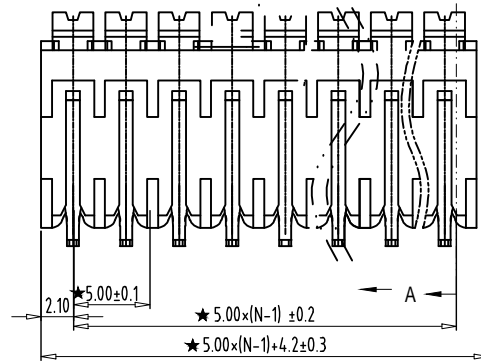
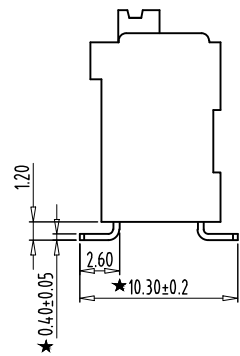
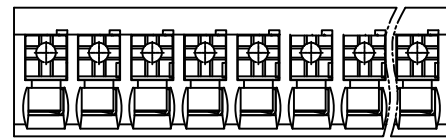
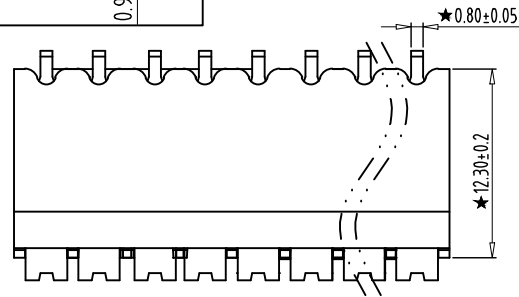


REV	CONTENT	CHK	DATE
VO.0	修正图面	CXL	22.04.01



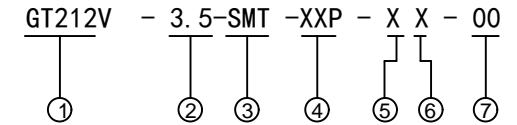
PCB LAYOUT



SECTION A-A

Electrical :

- |                                         |               |                        |
|-----------------------------------------|---------------|------------------------|
|                                         | UL            | IEC                    |
| 1. Rated Voltage :                      | 300V          | 320V                   |
| 2. Rated Current :                      | 12A           | 17.5A                  |
| 3. Wire Range :                         | 28-14AWG      | 0.2-1.5mm <sup>2</sup> |
| 4. Stripping Length :                   | 8-9mm         |                        |
| 5. Withstanding Voltage :               | AC1600V/1Min. |                        |
| 6. Operating Temperature :              | -40°C~+130°C  |                        |
| 7. RoHS Compliance                      |               |                        |
| 8. Safty Approval :                     | ULus CE       |                        |
| 9. "★" is the key quality control point |               |                        |



- ① Sereies NO.
- ② Pitch
- ③ SMT
- ④ Poles  
02 02Contacts  
03 03Contacts  
...  
24 24Contacts
- ⑤ 1 Single Pitch  
2 Double Pitch
- ⑥ Color: 1 Grey  
2 Blue  
3 Black  
4 Green  
5 Orange  
6 Red  
7 Transparent  
8 Yellow  
9 White
- ⑦ Customer Request: 00--Standard

4	SHRAPNEL	XXXXXX	P	STAINLESS STEEL	---
3	BUTTON	XXXXXX	P	PA4T	UL94V-0
2	CONTACTS	XXXXXX	P	COPPER ALLOY	Tin Plated
1	HOUSING	XXXXXX	1	LCP	UL94V-0
ITEM	NAME OF PART	NO. OF PART	Q'TY	MATERIAL	NOTE
DWG.	MYZ	DATE	21.04.09	SIZE	A4 UNITS mm SHEET/OF 1 / 1
CHK.	DATE			SCALE	1:1
APP.	DATE			NAME	GT212V-3.5-SMT-XXP-XX-00
				DWGNO.	XXXX

Total Pitch Tolerances in mm								Nominal dimension range in mm								⊥		≡		—		//			
over	over	over	over	over	over	over	over	over	over	over	over	over	over	over	over	over	over	over	over	over	over	over	over	over	over
0	30	53	70	90	115	150	250	0	30	53	70	90	115	150	200	250	320	0	10	0	100	0	100	0	150
±0.18	±0.20	±0.25	±0.3	±0.35	±0.44	±0.60	±0.70	±0.85	±0.20	±0.25	±0.30	±0.35	±0.44	±0.55	±0.70	±0.80	±0.90	0.2	0.3	0.3	0.3	0.2	0.3	0.2	0.5