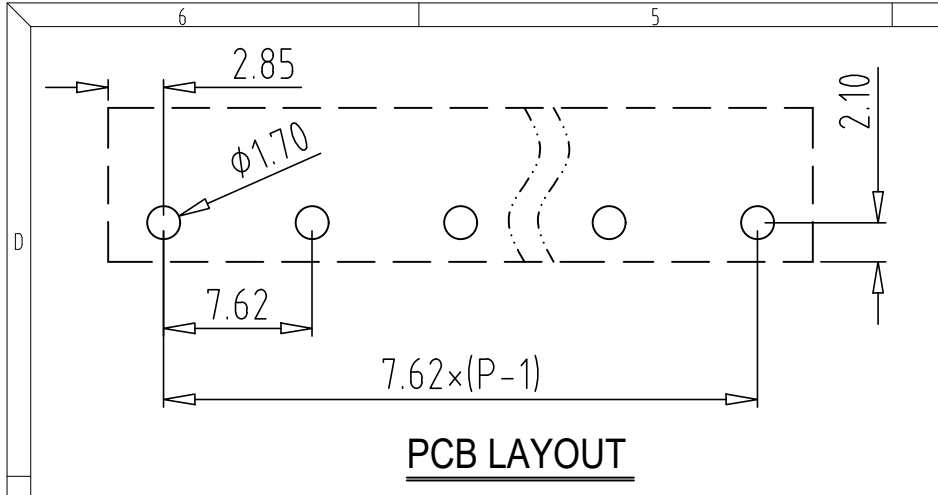
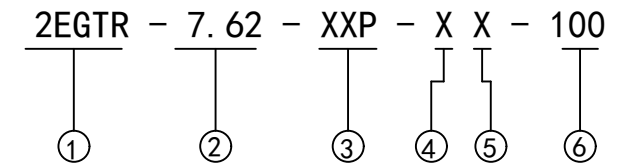
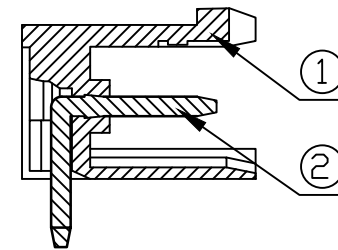
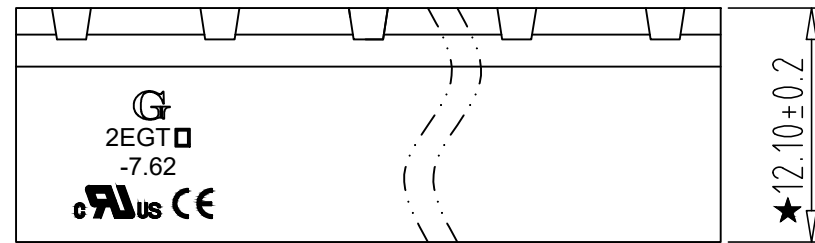


REV	CONTENT	CHK	DATE
V0.0	CONTENT	MYZ	21.07.03

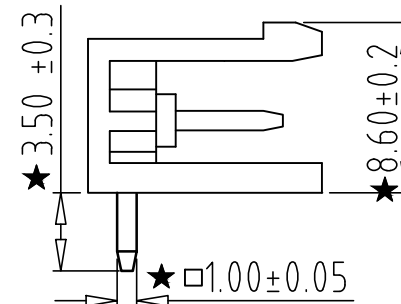
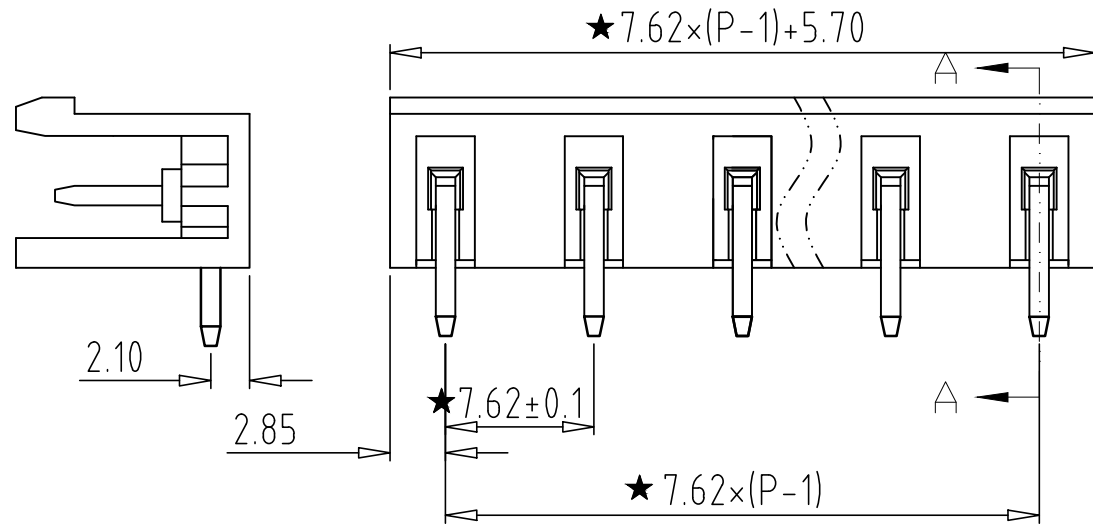


**Electrical :**

- |   |               |      |
|---|---------------|------|
|   | UL            | IEC  |
| 1.Rated Voltage :                       | 300V          | 320V |
| 2.Rated Current :                       | 15A           | 20A  |
| 3.Withstanding Voltage :                | AC1600V/1Min. |      |
| 4.Operating Temperature :               | -40°C~+105°C  |      |
| 5. RoHS Compliance                      |               |      |
| 6. Safty Approval :                     |               |      |
| 7. "★" is the key quality control point |               |      |



- ① Series NO.      ④ 1 Single Pitch  
                          2 Double Pitch
- ② Pitch            ⑤ Color: 1 Grey  
                          2 Blue  
                          3 Black  
                          4 Green  
                          5 Orange  
                          6 Red  
                          7 Transparent  
                          8 Yellow  
                          9 White
- ③ Poles  
02 02Contacts  
03 03Contacts  
...  
24 24Contacts
- ⑥ Customer Request: 100--Standard



Total Pitch Tolerances in mm										Nominal dimension range in mm										⊥		≡		-		//				
over	over	over	over	over	over	over	over	over	over	over	over	over	over	over	over	over	over	over	over	over	over	over	over	over	over	over	over	over	over	over
0	30	53	70	90	115	150	250	350	500	0	30	53	70	90	115	150	200	250	320	0	10	all	to	to	0	100	100	150	150	150
±0.18	±0.20	±0.25	±0.3	±0.35	±0.44	±0.60	±0.70	±0.85	±0.20	±0.25	±0.30	±0.35	±0.44	±0.55	±0.70	±0.80	±0.90	0.2	0.3	0.3	0.2	0.3	0.5							

2	PIN	XX	P	Brass	Tin Plated
1	HOUSING	XX	1	PA66(UL94V-0)	SEE NOTE
ITEM	NAME OF PART	NO. OF PART	Q"TY	MATERIAL	NOTE
DWG.	MYZ	DATE	21.07.03	SIZE	A4 UNITS mm SHEET/OF 1/1
CHK.	DATE		SCALE	1:1	
APP.	DATE			NAME 2EGTR-7.62-XXP-XX-100	
宁波冠泰电子有限公司 NINGBO GOLTEN ELECTRONICS CO., LTD.				DWGNO. XXXX	