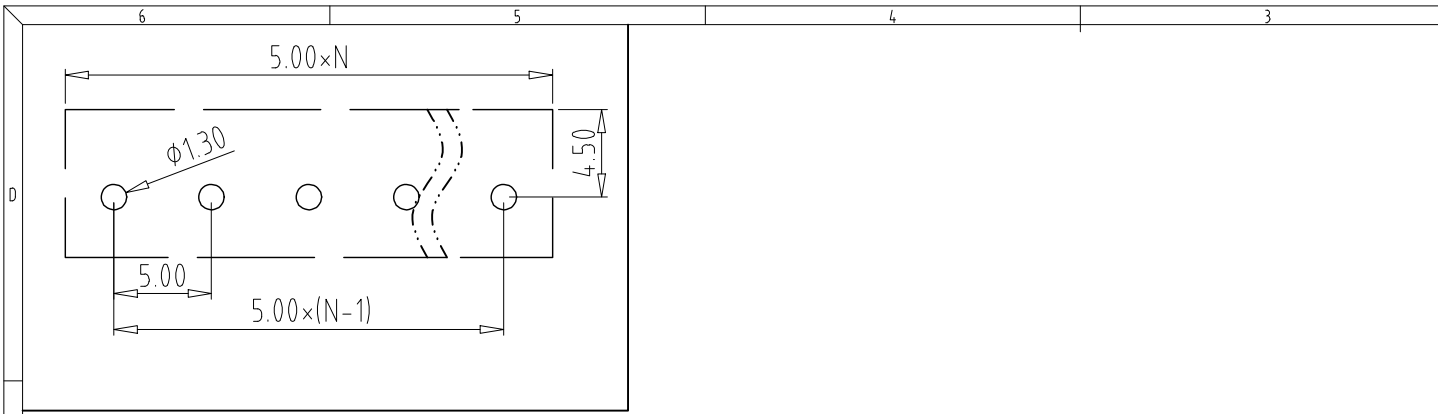
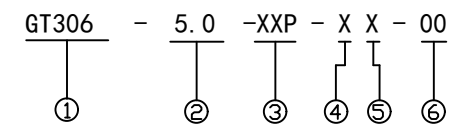
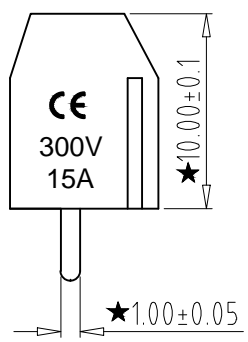
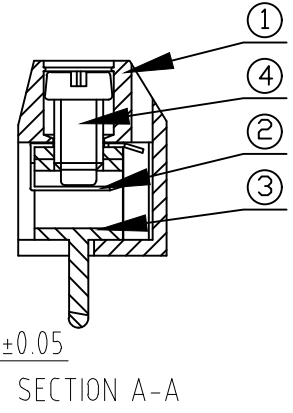
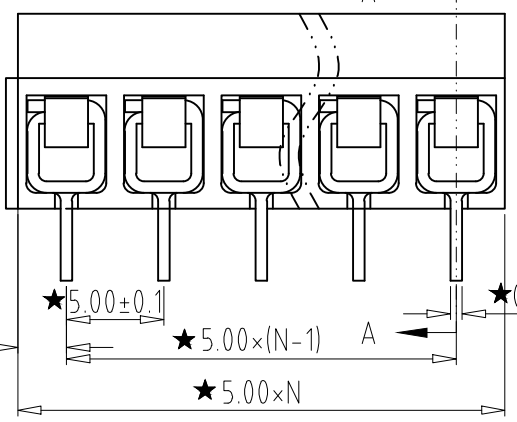
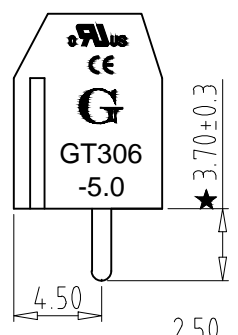
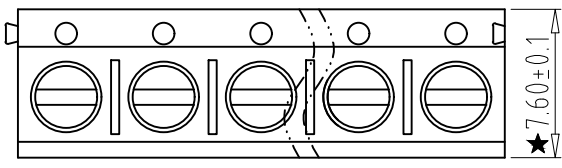


REV	CONTENT	CHK	DATE
V0.0	CONTENT	MYZ	21.06.29



Electrical :

- | | | |
|---|----------------|--------------------|
| | UL | IEC |
| 1. Rated Voltage : | 300V | 250V |
| 2. Rated Current : | 10A | 15A |
| 3. Torque Value : | M2.5, 2.6Lb.in | M2.5, 0.29N.m |
| 4. Wire Range: | 22-14AWG | 2.5mm ² |
| 5. Stripping Length : | 5-6mm | |
| 6. Withstanding Voltage : | AC2000V/1Min. | |
| 7. Operating Temperature : | -30°C~+120°C | |
| 8. RoHS Compliance | | |
| 9. Safety Approval : | UL CE | |
| 10. "★" is the key quality control point. | | |



- ① Series NO. ④ 1 Single Pitch
2 Double Pitch
- ② Pitch ⑤ Color: 1 Grey
2 Blue
3 Black
4 Green
5 Orange
6 Red
7 Transparent
8 Yellow
9 White
- ③ Poles
02 02Contacts
03 03Contacts
24 24Contacts
- ⑥ Customer Request: 00-- Standard

4	SCREW	XX	P	Steel	Zn Plated
3	PIN HEADER	XX	P	Brass	Tin Plated
2	SHRAPNEL	XX	P	Stainless steel	
1	HOUSING	XX	1	PBT UL94V-0	SEE NOTE
ITEM	NAME OF PART	NO. OF PART	Q'TY	MATERIAL	NOTE
DWG.	MYZ	DATE	21.06.29	SIZE	A4 UNITS mm SHEET/OF 1 / 1
CHK.	DATE			SCALE	1:1
APP.	DATE			NAME	GT306-5.0-XXP-XX-00
Grolten 宁波冠泰电子有限公司 NINGBO GOLTEN ELECTRONICS CO., LTD.				DWGNO.	XXXX

Total Pitch Tolerances in mm										Nominal dimension range in mm										⊥		≡		—		//	
over	over	over	over	over	over	over	over	over	over	over	over	over	over	over	over	over	over	over	over	over	over	over	over	over	over	over	over
0	30	53	70	90	115	150	250	350	500	0	30	53	70	90	115	150	200	250	320	0	10	0	100	0	100	0	150
±0.18	±0.20	±0.25	±0.3	±0.35	±0.44	±0.60	±0.70	±0.85	±0.20	±0.25	±0.30	±0.35	±0.44	±0.55	±0.70	±0.80	±0.90	0.2	0.3	0.3	0.3	0.2	0.3	0.2	0.3	0.2	0.5