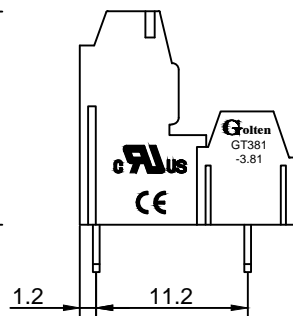
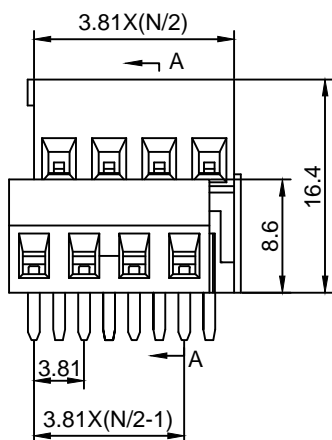
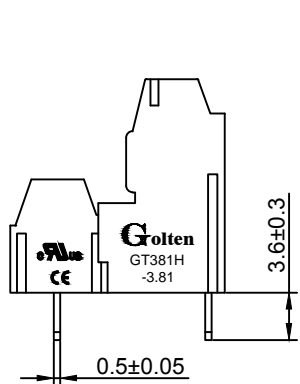


Material :

- (a) Housing1 : PA66(UL94V-0)
- (b) Screws : Steel , Cr³⁺Zn Plated
- (c) Cage : Brass , Ni Plated
- (d) Pin Header1 : Brass , Tin Plated
- (e) Housing2 : PA66(UL94V-0)
- (f) Pin Header2 : Brass , Tin Plated

Electrical :

- | | | |
|------------------------------|----------------|------------------------|
| | UL | IEC |
| 1.Rated Voltage : | 300V | 130V |
| 2.Rated Current : | 12A | 10A |
| 3.Torque Value : | M2 , 1.77Lb.in | M2 , 0.2N.m |
| 4.Wire Range: | 26-16AWG | 0.5-1.0mm ² |
| 5.Stripping Length : | 4-5mm | |
| 6.Withstanding Voltage : | AC1250V/1Min. | |
| 7.Operating Temperature : | -40°C~+105°C | |
| 8.RoHS Compliance | | |
| 9.Safety Approval : | cULus | |
| 10.Undimensioned Tolerances: | | |

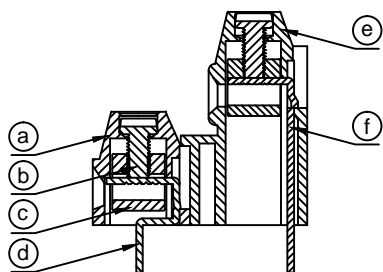


Pitch Range In mm			Nominal Dimension Range In mm					Tolerances	
≤6	6 ~ 10	10 ~ 24	≤30	30 ~ 60	60 ~ 100	100 ~ 150	>150	0.05/10	0.1°
±0.10	±0.15	±0.25	±0.20	±0.30	±0.50	±0.70	±1.00	±0.1°	

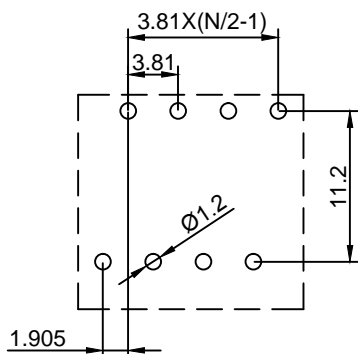
GT381B - 3.81 - XXP - X X - 00 AH

① ② ③ ④ ⑤ ⑥ ⑦

- ① Series No. ④ 1 Single Pitch
 2 Double Pitch
- ② Pitch ⑤ Color: 1 Grey
 2 Blue
 3 Black
 4 Green(Standard For AH)
- ③ Poles
04 04Contacts
06 06Contacts
...
48 48Contacts
- ⑥ Customer Request : 00--Standard
- ⑦ AH--Standard(PA66)
- 5 Orange
6 Red
7 Transparent
8 Yellow
9 White



A-A



DETACHED LISTS	Grolten 宁波冠泰电子有限公司 NINGBO GOLTEN ELECTRONICS CO., LTD.							
	APPD: MA_5/26/16'	PART NO. GT381B-3.81-XXP-XX-00AH						
	CHKD: Yu_5/25/16'							
	DRFT: Chen_5/24/16'							
 THIRD ANGLE PROJECTION		<table border="1"> <tr> <td>REV</td> <td>1</td> </tr> <tr> <td>SHEET</td> <td>1/1</td> </tr> <tr> <td>SCALE</td> <td>1/1</td> </tr> </table>	REV	1	SHEET	1/1	SCALE	1/1
REV	1							
SHEET	1/1							
SCALE	1/1							
 MM (INCH) DO NOT SCALE DRAWING								