

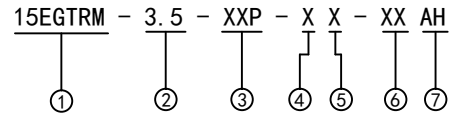
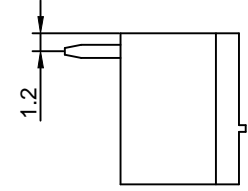
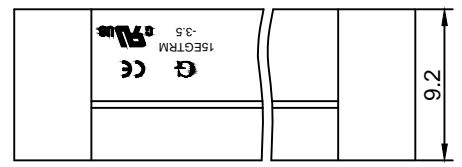
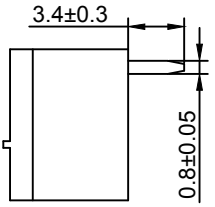
Material :

- ① Pin Header : Brass , Tin Plated
- ② Housing : PA66(UL94V-0)
- ③ Nut : Brass

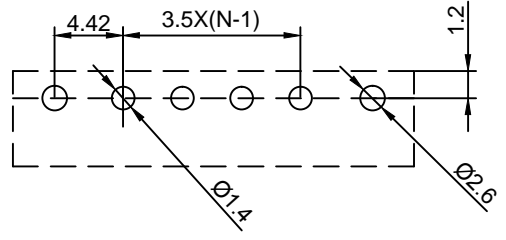
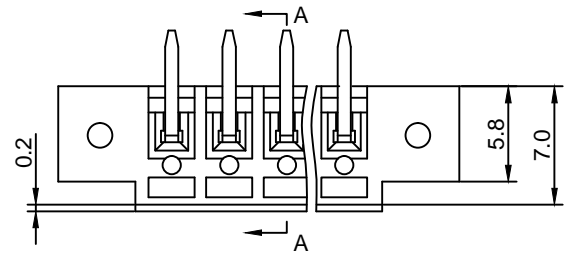
Electrical :

- 1. Rated Voltage : 300V
- 2. Rated Current : 8A
- 3. Withstanding Voltage : AC1600V/1Min.
- 4. Operating Temperature : -40°C~+105°C
- 5. RoHS Compliance
- 6. Safety Approval :
- 7. Undimensioned Tolerances:

Pitch Range In mm			Nominal Dimension Range In mm					Tolerances	
≤6	6 ~ 10	10 ~ 24	≤30	30 ~ 60	60 ~ 100	100 ~ 150	>150	0.05/10	∠
±0.10	±0.15	±0.25	±0.20	±0.30	±0.50	±0.70	±1.00	±0.1°	

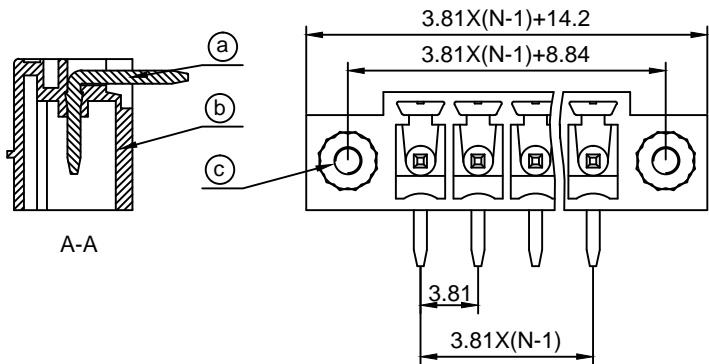


- ① Series No.
- ② Pitch
- ③ Poles
02 02Contacts
03 03Contacts
...
24 24Contacts
- ④ 1 Single Pitch
2 Double Pitch
- ⑤ Color: 1 Grey
2 Blue
3 Black
4 Green(Standard For AH)
5 Orange
6 Red
7 Transparent
8 Yellow
9 White
- ⑥ Customer Request : 00--Standard
- ⑦ AH--Standard(PA66)



DETACHED LISTS	Grolten 宁波冠泰电子有限公司 NINGBO GOLTEN ELECTRONICS CO., LTD.							
	APPD: MA_12/24/16'	PART NO. 15EGTRM-3.5-XXP-XX-00AH						
	CHKD: Yu_12/23/16'							
	DRFT: Chen_12/22/16'							
 THIRD ANGLE PROJECTION		<table border="1"> <tr> <td>REV</td> <td>1</td> </tr> <tr> <td>SHEET</td> <td>1/1</td> </tr> <tr> <td>SCALE</td> <td>1/1</td> </tr> </table>	REV	1	SHEET	1/1	SCALE	1/1
REV	1							
SHEET	1/1							
SCALE	1/1							
 MM (INCH) DO NOT SCALE DRAWING								

H
G
F
E
D
C
B
A



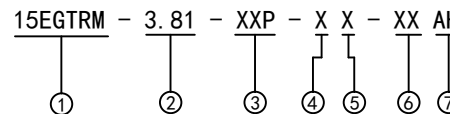
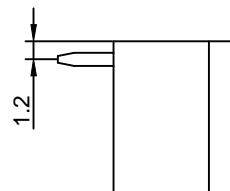
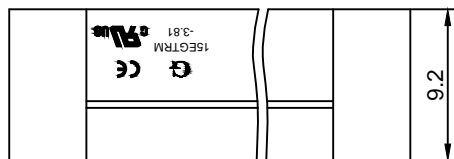
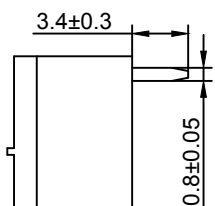
Material :

- (a) Pin Header : Brass , Tin Plated
- (b) Housing : PA66(UL94V-0)
- (c) Nut : Brass

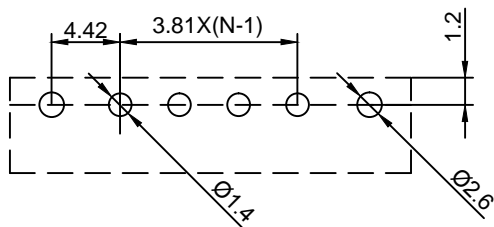
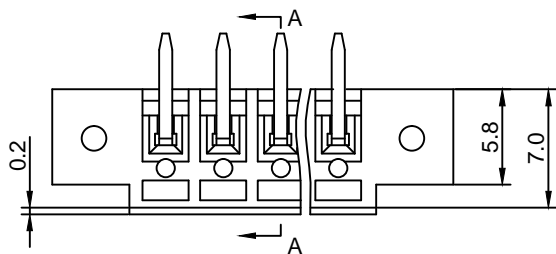
Electrical :

- 1. Rated Voltage : 300V UL IEC
- 2. Rated Current : 8A 8A 7A
- 3. Withstanding Voltage : AC1600V/1Min.
- 4. Operating Temperature : -40°C~+105°C
- 5. RoHS Compliance
- 6. Safety Approval :
- 7. Undimensioned Tolerances:

Pitch Range In mm			Nominal Dimension Range In mm					—	∩	∇
≤6	6 ~ 10	10 ~ 24	≤30	30 ~ 60	60 ~ 100	100 ~ 150	>150	0.05/10		
±0.10	±0.15	±0.25	±0.20	±0.30	±0.50	±0.70	±1.00	±0.1°		



- ① Series No.
- ② Pitch
- ③ Poles
02 02Contacts
03 03Contacts
...
24 24Contacts
- ④ 1 Single Pitch
2 Double Pitch
- ⑤ Color: 1 Grey
2 Blue
3 Black
4 Green(Standard For AH)
5 Orange
6 Red
7 Transparent
8 Yellow
9 White
- ⑥ Customer Request : 00--Standard
- ⑦ AH--Standard(PA66)



DETACHED LISTS	Grolten 宁波冠泰电子有限公司 NINGBO GOLTEN ELECTRONICS CO., LTD.													
	APPD: MA_12/24/16'	PART NO. 15EGTRM-3.81-XXP-XX-00AH												
	CHKD: Yu_12/23/16'													
	DRFT: Chen_12/22/16'													
 THIRD ANGLE PROJECTION		<table border="1"> <tr> <td>DRAWING NO.</td> <td>REV</td> <td>1</td> </tr> <tr> <td></td> <td>SHEET</td> <td>1/1</td> </tr> <tr> <td>MM (INCH)</td> <td>DO NOT SCALE DRAWING</td> <td>SCALE</td> </tr> <tr> <td></td> <td></td> <td>1/1</td> </tr> </table>	DRAWING NO.	REV	1		SHEET	1/1	MM (INCH)	DO NOT SCALE DRAWING	SCALE			1/1
DRAWING NO.	REV	1												
	SHEET	1/1												
MM (INCH)	DO NOT SCALE DRAWING	SCALE												
		1/1												

8 | 7 | 6 | 5 | 4 | 3 | 2 | 1