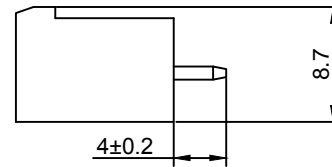
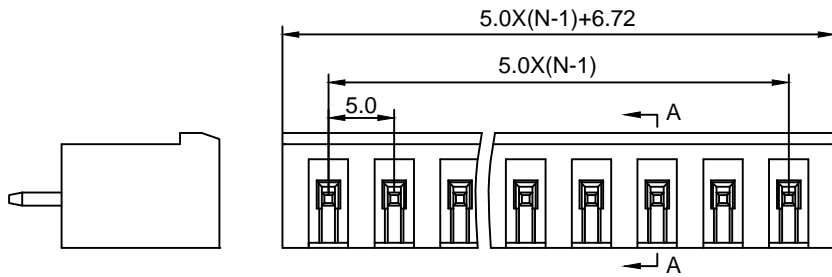


**Material :**

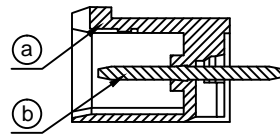
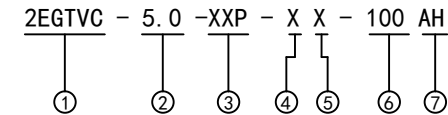
- Ⓐ Housing : PA66(UL94V-0)
- Ⓑ Pin Header : Brass , Tin Plated

**Electrical :**

- |                              |                |      |
|------------------------------|----------------|------|
|                              | UL             | IEC  |
| 1. Rated Voltage :           | 300V           | 320V |
| 2. Rated Current :           | 15A            | 20A  |
| 3. Withstanding Voltage :    | AC1600V/1Min.  |      |
| 4. Operating Temperature :   | -40 °C~+105 °C |      |
| 5. RoHS Compliance           |                |      |
| 6. Safety Approval :         | UL             |      |
| 7. Undimensioned Tolerances: |                |      |

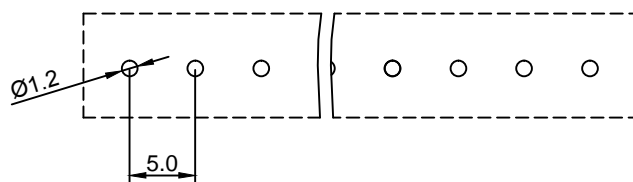


Pitch Range In mm			Nominal Dimension Range In mm					—	∩	∇
≤6	6 ~ 10	10 ~ 24	≤30	30 ~ 60	60 ~ 100	100 ~ 150	>150	0.05/10	∠	
±0.10	±0.15	±0.25	±0.20	±0.30	±0.50	±0.70	±1.00	±0.1°		

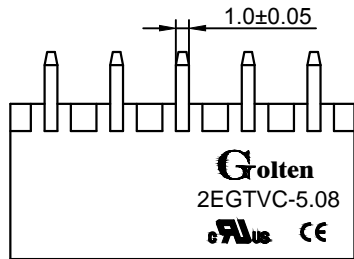


A-A

- ① Series No.
- ② Pitch
- ③ Poles  
02 02Contacts  
03 03Contacts  
...  
24 24Contacts
- ④ 1 Single Pitch  
2 Double Pitch
- ⑤ Color: 1 Grey  
2 Blue  
3 Black  
4 Green(Standard For AH)  
5 Orange  
6 Red  
7 Transparent  
8 Yellow  
9 White
- ⑥ Customer Request: 100--Standard
- ⑦ AH--Standard(PA66)



DETACHED LISTS	<b>Golten</b> 宁波冠泰电子有限公司 NINGBO GOLTEN ELECTRONICS CO., LTD.							
	APPD: MA_4/11/16'	PART NO. 2EGTVC-5.0-XXP-XX-100AH						
	CHKD: Yu_4/10/16'							
	DRFT: Chen_4/9/16'							
 THIRD ANGLE PROJECTION	 MM (INCH)	<table border="1"> <tr> <td>REV</td> <td>1</td> </tr> <tr> <td>SHEET</td> <td>1/1</td> </tr> <tr> <td>SCALE</td> <td>1/1</td> </tr> </table>	REV	1	SHEET	1/1	SCALE	1/1
REV	1							
SHEET	1/1							
SCALE	1/1							



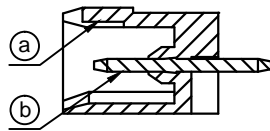
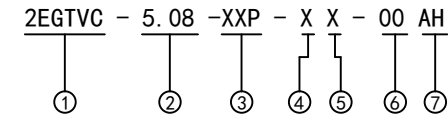
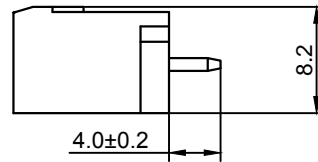
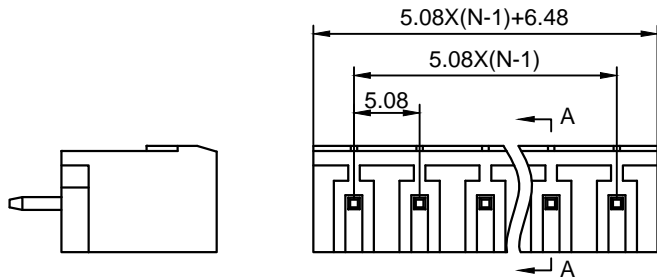
**Material :**

- Ⓐ Housing : PA66(UL94V-0)
- Ⓑ Pin Header : Brass , Tin Plated

**Electrical :**

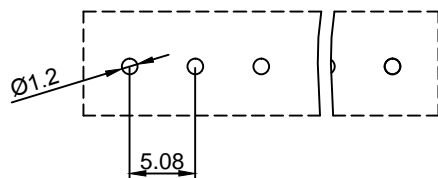
- |   |      |      |
|---|------|------|
|   | UL   | IEC  |
| 1. Rated Voltage :                      | 300V | 320V |
| 2. Rated Current :                      | 15A  | 20A  |
| 3. Withstanding Voltage : AC1600V/1Min. |      |      |
| 4. Operating Temperature : -40°C~+105°C |      |      |
| 5. RoHS Compliance                      |      |      |
| 6. Safety Approval :                    |      |      |
| 7. Undimensioned Tolerances:            |      |      |

Pitch Range In mm			Nominal Dimension Range In mm					—	∩	∇
≤6	6 ~ 10	10 ~ 24	≤30	30 ~ 60	60 ~ 100	100 ~ 150	>150	0.05/10		
±0.10	±0.15	±0.25	±0.20	±0.30	±0.50	±0.70	±1.00	±0.1°		



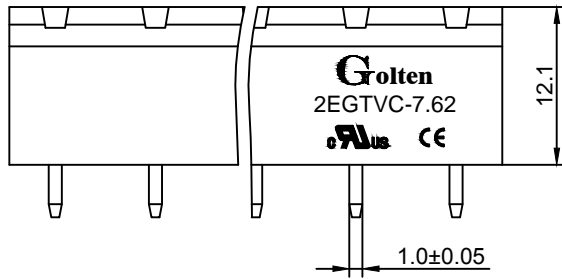
A-A

- ① Series No.
- ② Pitch
- ③ Poles  
02 02Contacts  
03 03Contacts  
...  
24 24Contacts
- ④ 1 Single Pitch  
2 Double Pitch
- ⑤ Color: 1 Grey  
2 Blue  
3 Black  
4 Green(Standard For AH)  
5 Orange  
6 Red  
7 Transparent  
8 Yellow  
9 White
- ⑥ Customer Request: 00--Standard
- ⑦ AH--Standard(PA66)



DETACHED LISTS	<b>Golten</b> 宁波冠泰电子有限公司 NINGBO GOLTEN ELECTRONICS CO., LTD.	
	APPD: MA_4/11/16'	PART NO. 2EGTVC-5.08-XXP-XX-00AH
	CHKD: Yu_4/10/16'	
	DRFT: Chen_4/9/16'	
	THIRD ANGLE PROJECTION	
	MM (INCH)	DO NOT SCALE DRAWING
		REV 1
		SHEET 1/1
		SCALE 1/1

H  
G  
F  
E  
D  
C  
B  
A



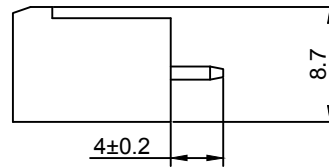
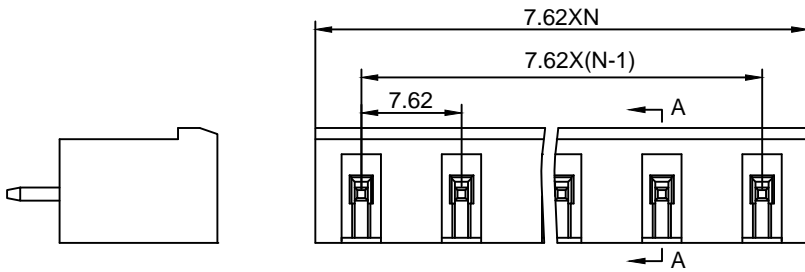
**Material :**

- (a) Housing : PA66(UL94V-0)
- (b) Pin Header : Brass , Tin Plated

**Electrical :**

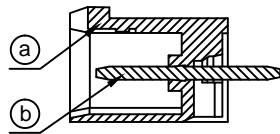
- 1. Rated Voltage : 300V UL IEC
- 2. Rated Current : 15A 400V
- 3. Withstanding Voltage : AC1600V/1Min.
- 4. Operating Temperature : -40°C~+105°C
- 5. RoHS Compliance
- 6. Safety Approval :
- 7. Undimensioned Tolerances:

Pitch Range In mm			Nominal Dimension Range In mm					—	∩	∇
≤6	6 ~ 10	10 ~ 24	≤30	30 ~ 60	60 ~ 100	100 ~ 150	>150	0.05/10		
±0.10	±0.15	±0.25	±0.20	±0.30	±0.50	±0.70	±1.00	±0.1°		



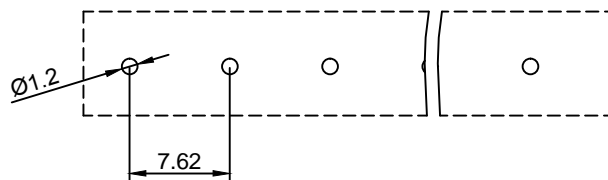
2EGTVC - 7.62 -XXP - X X - 100 AH

①      ②      ③      ④   ⑤      ⑥      ⑦



A-A

- ① Series No.
- ② Pitch
- ③ Poles  
02 02Contacts  
03 03Contacts  
...  
24 24Contacts
- ④ 1 Single Pitch  
2 Double Pitch
- ⑤ Color: 1 Grey  
2 Blue  
3 Black  
4 Green(Standard For AH)  
5 Orange  
6 Red  
7 Transparent  
8 Yellow  
9 White
- ⑥ Customer Request: 100--Standard
- ⑦ AH--Standard(PA66)



DETACHED LISTS	<b>Golten</b> 宁波冠泰电子有限公司 NINGBO GOLTEN ELECTRONICS CO., LTD.	
	APPD: MA_4/11/16'	PART NO. 2EGTVC-7.62-XXP-XX-100AH
	CHKD: Yu_4/10/16'	
	DRFT: Chen_4/9/16'	
	THIRD ANGLE PROJECTION	MM (INCH)
	DO NOT SCALE DRAWING	SCALE 1/1